

VALVOLE ED ELETTROVALVOLE IN TECNOPOLIMERO

TECHNOPOLYMER VALVES AND SOLENOID VALVES

serie 120

120 line



Guida alle referenze

Guide to references

ME 1/8" 22 3 PU ML NC P

Prodotto

Product

EV = Valvole Elettropneum.
Solenoid valves
ME = Valvole meccaniche
Mechanical valves
VM = Valvole manuali
Manual valves
VP = Valvole pneumatiche
Pneumatic valves

Connessione

Connection

1/8" = G1/8"

Taglia

Body width

22 = 22 mm

Funzione

Function

3 = 3/2
5 = 5/2
6 = 5/3

Azionamento

Operation

PU = Puntale - Pushrod
PP = Puntale passa-parete - Through-wall pushrod
LT = Leva tasto - Taste lever
RL = Leva rullo - Roller lever
RU = Leva rullo unidirezionale - Unidirectional roller lever
PB = Per comandi a pannello - For panel mounting actuators
PS = Puntale servopilotato - Sensible pushrod
PO = Puntale passa parete servopilotato
Sensible through wall pushrod
LS = Leva tasto servopilotata - Sensible taste lever
RS = Leva rullo servopilotata - Sensible roller lever
RO = Leva rullo unidirezionale servopilotata
Sensible unidirectional roller lever
AN = Antenna - Whisker
TA = Tiretto agganciato - Detented push-pull
TS = Tiretto sganciato - Push-pull
LV = Leva assiale - Axial lever
L9 = Leva 90° - 90° Lever
PN = Pneumatico - Pneumatic
SL = Elettropneumatico - Solenoid
SA = Elettropneumatico asservito M5
Assisted solenoid with M5
AU = Elettropneumatico asservito raccordo automatico
Assisted solenoid with push-in fitting

Materiale

Material

P = Plastica
Plastic

Opzione

Option

NC = Normalmente chiusa
Normally closed
NO = Normalmente aperta
Normally opened
CC = Centri chiusi
Closed centres
CA = Centri aperti
Opened centres
CP = Centri in pressione
Pressure centres
OO = 5/2

Ritorno

Return

ML = Molla
Spring
PM = Pneumo-meccanico
Pilot
BS = Bistabile
Bistable
ST = Stabile su 3 posizioni
Stable on 3 positions
RC = Ritorno al centro
Return to centre
MP = Molla pneumatica
Pneumatic spring
DF = Differenziale
Differential

Le valvole in tecnopolimero a spola bilanciata della Linea 120 trovano largo impiego in numerose applicazioni industriali, grazie alla loro affidabilità e versatilità d'impiego. L'elevata standardizzazione del prodotto consente una grande completezza di gamma, che offre in diverse versioni, valvole manuali, meccaniche, pneumatiche ed elettropneumatiche.

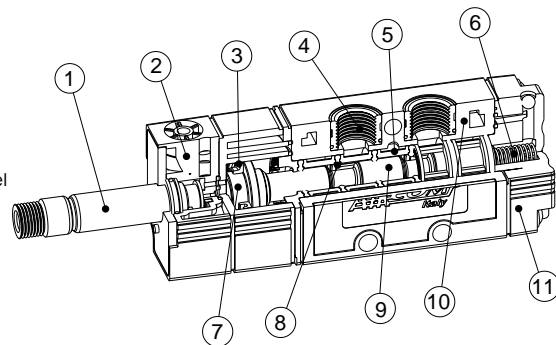
Line 120 includes balanced spool valves made from technopolymer that are largely used for several industrial applications, thanks to their reliability and utilizing flexibility. The product high standardization allows a remarkable completeness of this range, offering manually, mechanically, pneumatically operated valves and solenoid valves in different models.

Materiali impiegati

Used materials

- ① OPERATORE: Ottone, Acciaio INOX
- ② CORPO OPERATORE: POM
- ③ GUARNIZIONE: NBR
- ④ INSERTI: Ottone OT 58
- ⑤ DISTANZIALI: Tecnopolimero
- ⑥ MOLLA: Acciaio INOX
- ⑦ PISTONE DI AZIONAMENTO: POM
- ⑧ GUARNIZIONI: NBR
- ⑨ SPOLA: Alluminio Nichelato
- ⑩ FONDELLO: POM
- ⑪ CORPO VALVOLA: Tecnopolimero

- ① OPERATOR: Brass, Stainless steel
- ② OPERATOR BODY: POM
- ③ SEAL: NBR Rubber
- ④ INSERTS: OT 58 Brass
- ⑤ SPACING BAR: Technopolymer
- ⑥ SPRING: Stainless steel
- ⑦ PISTON ROD: POM
- ⑧ SEALS: NBR Rubber
- ⑨ SPOOL: Nickel plated Aluminium
- ⑩ BASE COMMAND: POM
- ⑪ VALVE BODY: Technopolymer



Dati Tecnici

Costruzione: Valvole a spola, 3/2 - 5/2 - 5/3
Fluid: Aria filtrata con o senza lubrificazione
Fissaggio: Mediante fori passanti sul corpo, in qualsiasi posizione
Tipo di connessione: G1/8"
Diametro nominale: 5 mm
Range di temperatura: 5+50°C (41+122°F)
Portata di riferimento (P=6 Bar - Δp=1 Bar): 490 NI/min

Technical data

Construction: 3/2 - 5/2 - 5/3 spool valves
Fluid: Filtered air with or without lubrication
Installation: Through holes in valve body, in any position
Connection type: G1/8"
Effective orifice: 5 mm
Temperature range: 5+50°C (41+122°F)
Reference flow rate (P=6 Bar - Δp=1 Bar): 490 NI/min

VALVOLE ED ELETTROVALVOLE IN TECNOPOLIMERO

TECHNOPOLYMER VALVES AND SOLENOID VALVES

Dati Tecnici

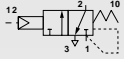
Pressione d'esercizio: 0÷10 Bar (0÷1,00 MPa)
 Pressione di pilotaggio: 1÷10 Bar (0,10÷1,00 MPa)
 Peso: 0,070 Kg

Technical data

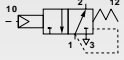
Working pressure: 0÷10 Bar (0÷1,00 MPa)
 Operating pressure: 1÷10 Bar (0,10÷1,00 MPa)
 Weight: 0,070 Kg

Codici di ordinazione

Order codes



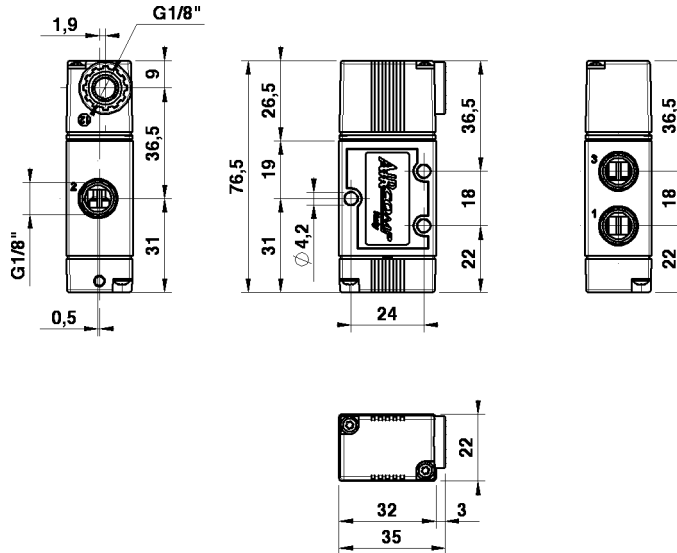
CODE **REF.**
 1202223001 VP 1/8" 22 3 PN PM NC P



1202223002 VP 1/8" 22 3 PN PM NO P

Valvole a comando pneumatico 3/2 - serie 120

3/2 Single pneumatic pilot valves - 120 line



Dati Tecnici

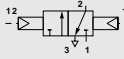
Pressione d'esercizio: 0÷10 Bar (0÷1,00 MPa)
 Pressione di pilotaggio: 0,5÷10 Bar (0,05÷1,00 MPa)
 Peso: 0,095 Kg

Technical data

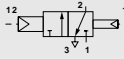
Working pressure: 0÷10 Bar (0÷1,00 MPa)
 Operating pressure: 0,5÷10 Bar (0,05÷1,00 MPa)
 Weight: 0,095 Kg

Codici di ordinazione

Order codes



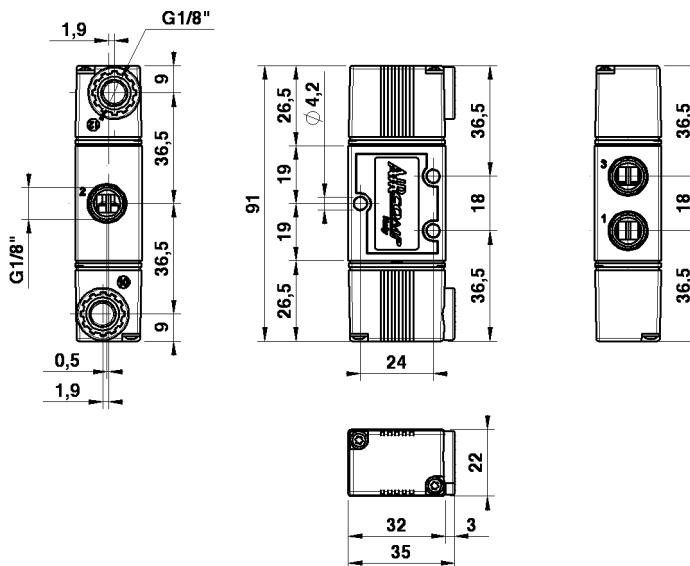
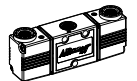
CODE **REF.**
 1202223003 VP 1/8" 22 3 PN BS OO P



1202223004 VP 1/8" 22 3 PN DF OO P

Valvole a doppio comando pneumatico 3/2 bistabili - serie 120

3/2 Double pneumatic pilot valves - 120 line



VALVOLE ED ELETTROVALVOLE IN TECNOPOLIMERO

TECHNOPOLYMER VALVES AND SOLENOID VALVES

Dati Tecnici

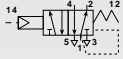
Pressione d'esercizio: 0÷10 Bar (0÷1,00 MPa)
 Pressione di pilotaggio: 1÷10 Bar (0,10÷1,00 MPa)
 Peso: 0,077 Kg

Technical data

Working pressure: 0÷10 Bar (0÷1,00 MPa)
 Operating pressure: 1÷10 Bar (0,10÷1,00 MPa)
 Weight: 0,077 Kg

Codici di ordinazione

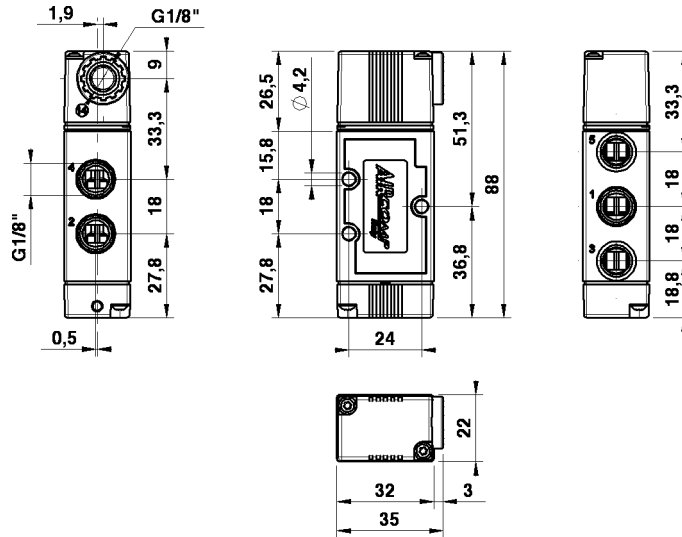
Order codes



CODE	REF.
1202225001	VP 1/8" 22 5 PN PM OO P

Valvola a comando pneumatico 5/2 - serie 120

5/2 Single pneumatic pilot valve - 120 line



2

Dati Tecnici

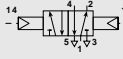
Pressione d'esercizio: 0÷10 Bar (0÷1,00 MPa)
 Pressione di pilotaggio (5/2): 0,5÷10 Bar (0,05÷1,00 MPa)
 (5/3): 2,1÷10 Bar (0,21÷1,00 MPa)
 Peso: 0,101 Kg

Technical data

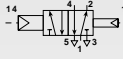
Working pressure: 0÷10 Bar (0÷1,00 MPa)
 Operating pressure (5/2): 0,5÷10 Bar (0,05÷1,00 MPa)
 (5/3): 2,1÷10 Bar (0,21÷1,00 MPa)
 Weight: 0,101 Kg

Codici di ordinazione

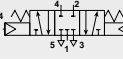
Order codes



CODE	REF.
1202225002	VP 1/8" 22 5 PN BS OO P



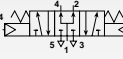
1202225003	VP 1/8" 22 5 PN DF OO P
------------	-------------------------



1202226001	VP 1/8" 22 6 PN RC CC P
------------	-------------------------



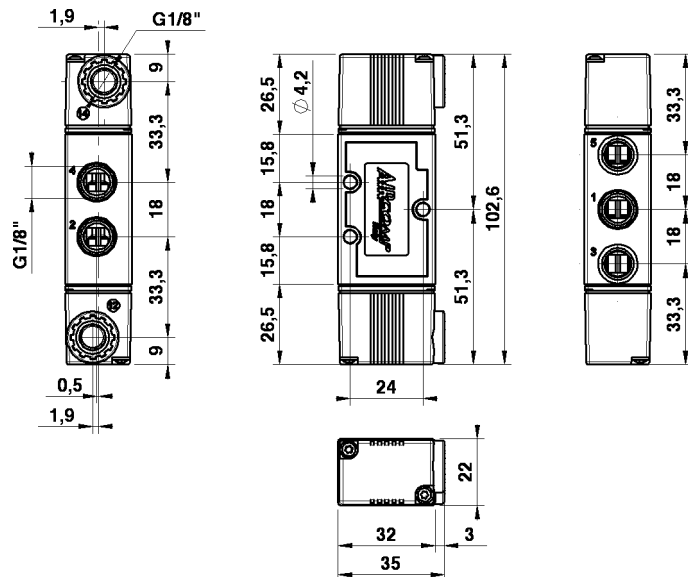
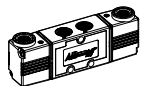
1202226002	VP 1/8" 22 6 PN RC CA P
------------	-------------------------



1202226003	VP 1/8" 22 6 PN RC CP P
------------	-------------------------

Valvole a doppio comando pneumatico 5/2-5/3 bistabili - serie 120

5/2-5/3 Double pneumatic pilot valves - 120 line



VALVOLE ED ELETTROVALVOLE IN TECNOPOLIMERO

TECHNOPOLYMER VALVES AND SOLENOID VALVES

Dati Tecnici

Pressione d'esercizio: 1+10 Bar (0,10+1,00 MPa)
 Tensione: 24V DC, 24V AC, 110V AC, 220V AC
 Grado di protezione con connettore: IP 65 EN 60529
 Tipo di azionamento manuale: Monostabile
 Peso: 0,080 Kg
 LA BOBINA VIENE FORNITA SEPARATAMENTE

Technical data

Working pressure: 1+10 Bar (0,10+1,00 MPa)
 Voltage: 24V DC, 24V AC, 110V AC, 220V AC
 Protection with connector: IP 65 EN 60529
 Manual override: Monostable
 Weight: 0,080 Kg
 COIL IS SUPPLIED SEPARATELY

Codici di ordinazione

Order codes

	CODE	REF.
	1202123001	EV 1/8" 22 3 SL PM NC P
	1202123002	EV 1/8" 22 3 SL PM NO P

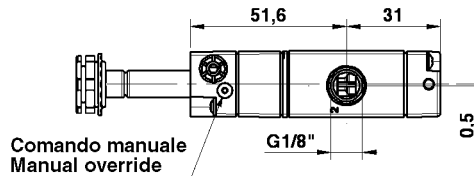
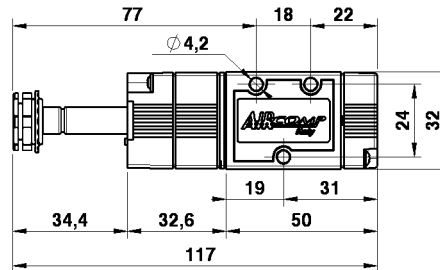
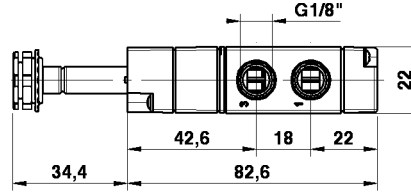
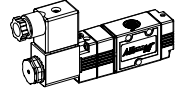
CON ALIMENTAZIONE SEPARATA

Pilot assisted

	CODE	REF.
	1202123004	EV 1/8" 22 3 SA PM NC P
	1202123007	EV 1/8" 22 3 AU PM NC P
	1202123005	EV 1/8" 22 3 SA PM NO P
	1202123008	EV 1/8" 22 3 AU PM NO P

Valvole elettro-pneumatiche 3/2 NC-NO - serie 120

3/2 NC-NO Single solenoid valves - 120 line



Dati Tecnici

Pressione d'esercizio: 0,5+10 Bar (0,05+1,00 MPa)
 Tensione: 24V DC, 24V AC, 110V AC, 220V AC
 Grado di protezione con connettore: IP 65 EN 60529
 Tipo di azionamento manuale: Monostabile
 Peso: 0,102 Kg
 LE BOBINE VENGONO FORNITE SEPARATAMENTE

Technical data

Working pressure: 0,5+10 Bar (0,05+1,00 MPa)
 Voltage: 24V DC, 24V AC, 110V AC, 220V AC
 Protection with connector: IP 65 EN 60529
 Manual override: Monostable
 Weight: 0,102 Kg
 COILS ARE SUPPLIED SEPARATELY

Codici di ordinazione

Order codes

	CODE	REF.
	1202123003	EV 1/8" 22 3 SL BS OO P

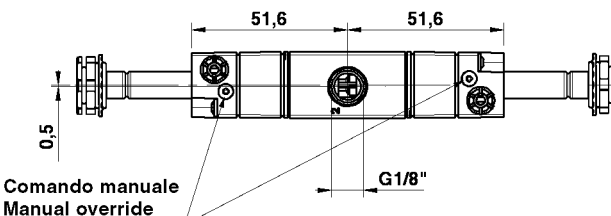
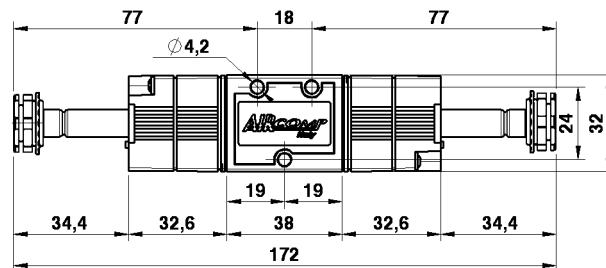
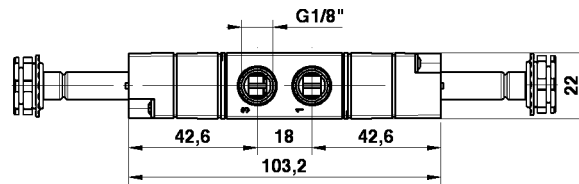
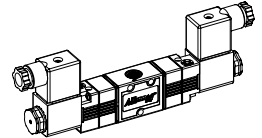
CON ALIMENTAZIONE SEPARATA

Pilot assisted

	CODE	REF.
	1202123006	EV 1/8" 22 3 SA BS OO P
	1202123009	EV 1/8" 22 3 AU BS OO P

Valvole elettro-pneumatiche 3/2 bistabile - serie 120

3/2 Double solenoid valve - 120 line



VALVOLE ED ELETTROVALVOLE IN TECNOPOLIMERO

TECHNOPOLYMER VALVES AND SOLENOID VALVES

Dati Tecnici

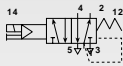
Pressione d'esercizio: 1÷10 Bar (0,10÷1,00 MPa)
 Tensione: 24V DC, 24V AC, 110V AC, 220V AC
 Grado di protezione con connettore: IP 65 EN 60529
 Tipo di azionamento manuale: Monostabile
 Peso: 0,086 Kg
 LA BOBINA VIENE FORNITA SEPARATAMENTE

Technical data

Working pressure: 1÷10 Bar (0,10÷1,00 MPa)
 Voltage: 24V DC, 24V AC, 110V AC, 220V AC
 Protection with connector: IP 65 EN 60529
 Manual override: Monostable
 Weight: 0.086 Kg
 COIL IS SUPPLIED SEPARATELY

Codici di ordinazione

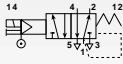
Order codes



CODE	REF.
1202125001	EV 1/8" 22 5 SL PM OO P

CON ALIMENTAZIONE SEPARATA

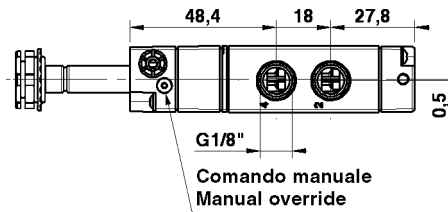
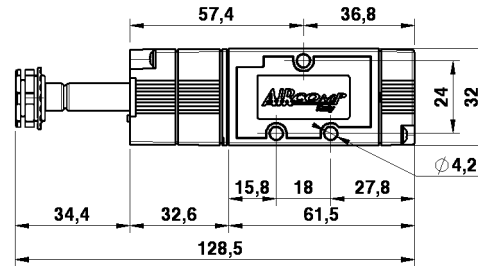
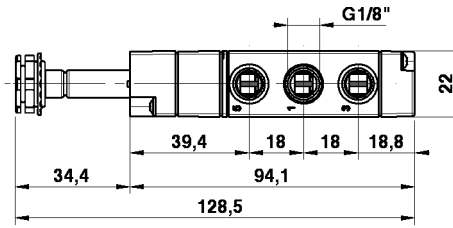
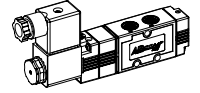
Pilot assisted



CODE	REF.
1202125003	EV 1/8" 22 5 SA PM OO P
1202125005	EV 1/8" 22 5 AU PM OO P

Valvole elettro-pneumatiche 5/2 - serie 120

5/2 Single solenoid valve - 120 line



Dati Tecnici

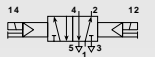
Pressione d'esercizio (5/2): 0,5÷10 Bar (0,05÷1,00 MPa)
 (5/3): 2,1÷10 Bar (0,21÷1,00 MPa)
 Tensione: 24V DC, 24V AC, 110V AC, 220V AC
 Grado di protezione con connettore: IP 65 EN 60529
 Tipo di azionamento manuale: Monostabile
 Peso: 0,116 Kg
 LE BOBINE VENGONO FORNITE SEPARATAMENTE

Technical data

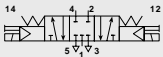
Working pressure (5/2): 0,5÷10 Bar (0,05÷1,00 MPa)
 (5/3): 2,1÷10 Bar (0,21÷1,00 MPa)
 Voltage: 24V DC, 24V AC, 110V AC, 220V AC
 Protection with connector: IP 65 EN 60529
 Manual override: Monostable
 Weight: 0.116 Kg
 COILS ARE SUPPLIED SEPARATELY

Codici di ordinazione

Order codes



1202125002	EV 1/8" 22 5 SL BS OO P
------------	-------------------------



1202126001	EV 1/8" 22 6 SL RC CC P
------------	-------------------------



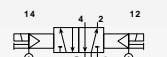
1202126002	EV 1/8" 22 6 SL RC CA P
------------	-------------------------



1202126003	EV 1/8" 22 6 SL RC CP P
------------	-------------------------

CON ALIMENTAZIONE SEPARATA

Pilot assisted



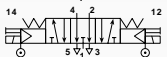
1202125004	EV 1/8" 22 5 SA BS OO P
------------	-------------------------

1202125006	EV 1/8" 22 5 AU BS OO P
------------	-------------------------



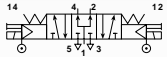
1202126004	EV 1/8" 22 6 SA RC CC P
------------	-------------------------

1202126007	EV 1/8" 22 6 AU RC CC P
------------	-------------------------



1202126005	EV 1/8" 22 6 SA RC CA P
------------	-------------------------

1202126008	EV 1/8" 22 6 AU RC CA P
------------	-------------------------

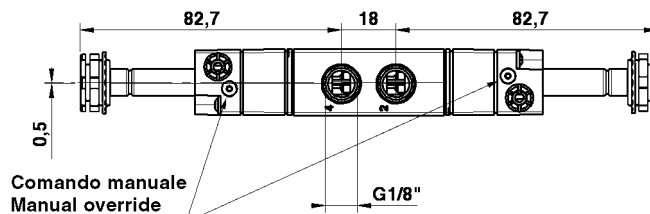
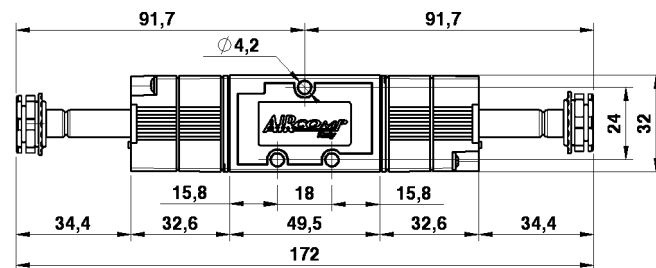
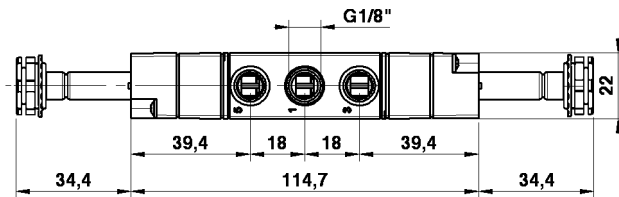
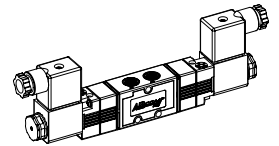


1202126006	EV 1/8" 22 6 SA RC CP P
------------	-------------------------

1202126009	EV 1/8" 22 6 AU RC
------------	--------------------

Valvole elettro-pneumatiche 5/2 - 5/3 bistabili - serie 120

5/2 - 5/3 Double solenoid valves - 120 line



FLUIDO SISTEM S.r.l.

Via Nicomede Bianchi, 61/3 - 10146 TORINO (Italy)
 Tel. +39 011.797.322 - 011.797.420 / Fax +39 011.797.412
 E-mail: fluidosistem@mclink.it - Web: www.fluidosistem.it