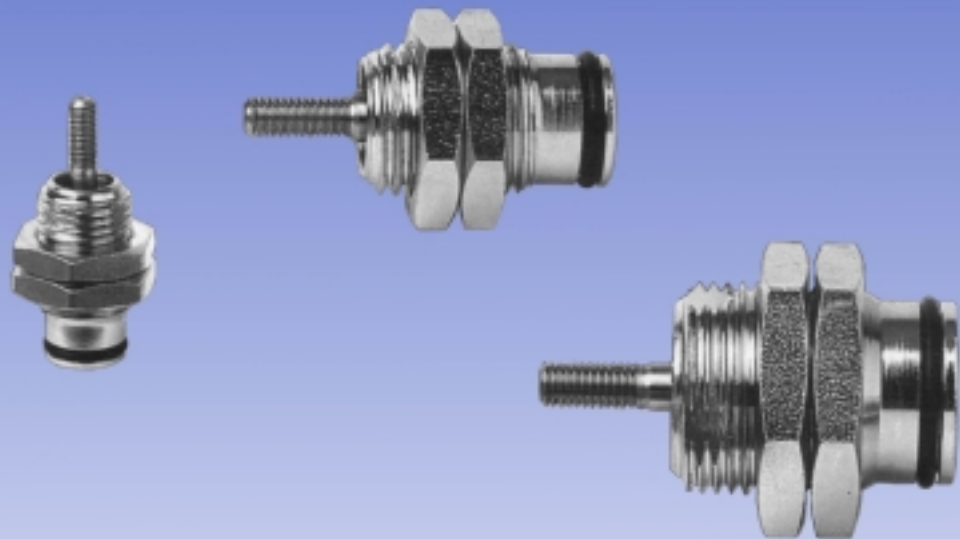


CILINDRI PNEUMATICI A CARTUCCIA

Cartridge pneumatic cylinders



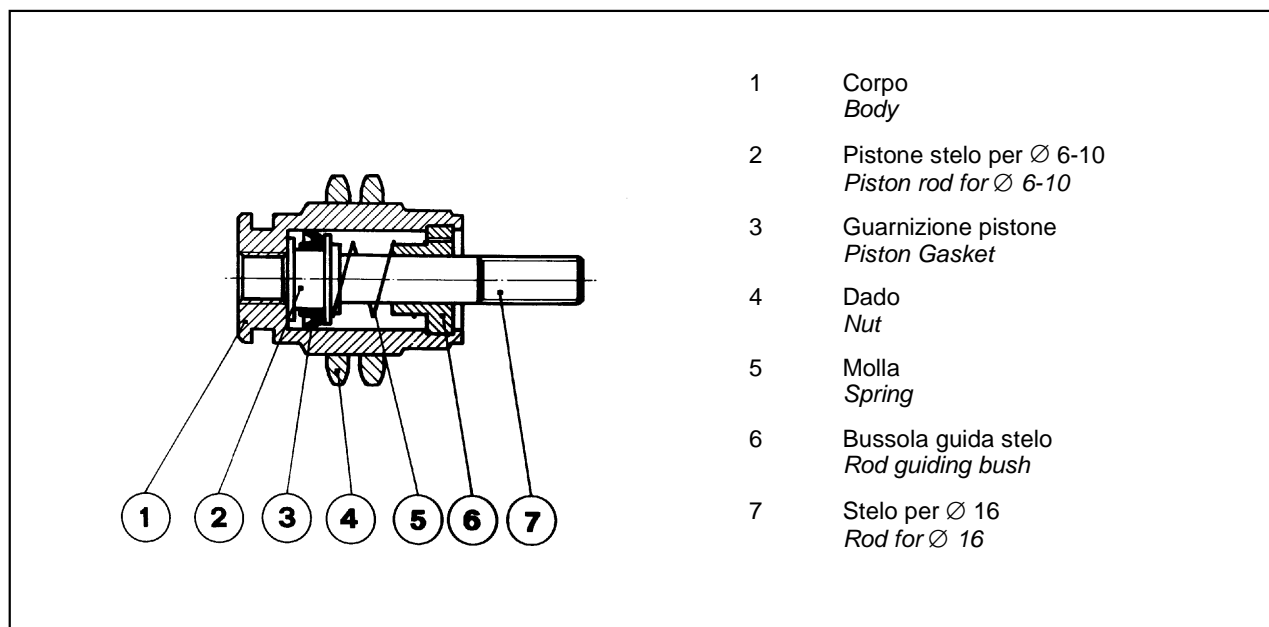
Serie **CT**

CILINDRI PNEUMATICI A CARTUCCIA serie CT

CARTRIDGE PNEUMATIC CYLINDERS series CT

CARATTERISTICHE TECNICHE / TECHNICAL FEATURES

| | |
|--|--|
| Pressione nominale di esercizio <i>Nominal working pressure</i> | : min.3 bar max 8 bar |
| Fluido <i>Fluid</i> | : aria compressa filtrata, con o senza lubrificazione : <i>filtered, compressed air, either with or without lubrication</i> |
| Temperatura d'impiego <i>Working temperature</i> | : -10 °C +80 °C |
| Alesaggi \varnothing <i>Bores</i> | : 6-10-16 mm |
| Corse <i>Stroke</i> | : 5-10-15 mm |
| Tipo di costruzione <i>Construction pattern</i> | : Bordato meccanicamente : <i>Mechanically beaded</i> |
| Versione <i>Version</i> | : Semplice effetto : <i>Simple effect</i> |
| Materiali <i>Materials</i> | : Corpo: ottone nichelato : <i>Body: nickel-plated brass</i> : Steli: acciaio inox AISI 303 : <i>Rod: AISI 303 stainless steel</i> |
| Guarnizioni <i>Gasket</i> | : Per funzionamento con o senza lubrificazione in speciale elastomero a base di NBR : <i>For running either with or without lubrication built up with a special NBR elastomer</i> |



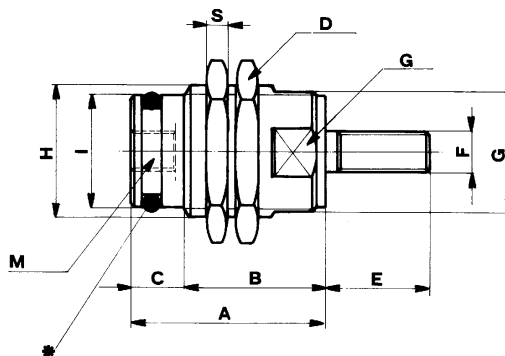
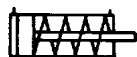
SEZIONE UTILE PER IL CALCOLO DELLA FORZA DEL CILINDRO USABLE SECTION IN ORDER TO CALCULATE THE CYLINDER FORCE

| \varnothing | 6 | 10 | 16 |
|----------------------|------|------|------|
| AREA cm ² | | | |
| Di tiro | 0,28 | 0,78 | 2,01 |

CILINDRI PNEUMATICI A CARTUCCIA serie CT

CARTRIDGE PNEUMATIC CYLINDERS series CT

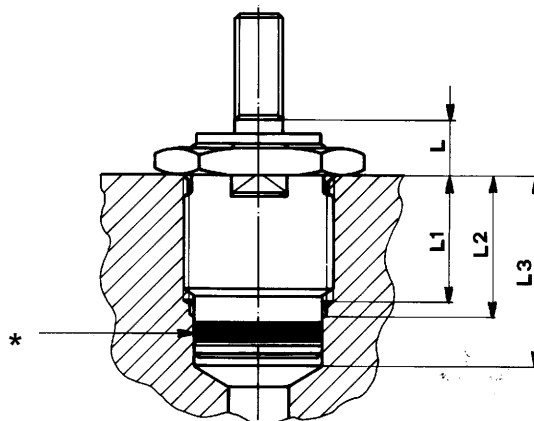
DIMENSIONI D'INGOMBRO / OVERALL SIZE



| Ø | DIM | A | | | B | | | C | D | E | F | G | H | I | M | S |
|----|-----|------|------|------|------|------|------|---|----|------|--------|----|---------|-----|----|---|
| | | 5 | 10 | 15 | 5 | 10 | 15 | | | | | | | | | |
| 6 | | 19,5 | 26,5 | 33,5 | 14,5 | 21,5 | 28,5 | 5 | 14 | 9 | M3x0,5 | 9 | M10x1 | 8,5 | M5 | 3 |
| 10 | | 23,5 | 30 | 37 | 16,5 | 23 | 30 | 7 | 19 | 11,5 | M4x0,7 | 14 | M15x1,5 | 13 | M5 | 4 |
| 16 | | 26,5 | 33,5 | 38,5 | 20,5 | 25,5 | 30,5 | 8 | 27 | 14 | M5x0,8 | 20 | M22x1,5 | 19 | M5 | 5 |

* CON "OR" ESTERNO PER FISSAGGIO DIRETTO SU MACCHINA

WITH OUTER O-RING FOR DIRECT FIXING ON MACHINE



| Ø | DIM | L | | | L1 | | | L2 | | | L3 | | |
|----|-----|---|----|----|----|----|----|----|----|----|----|----|----|
| | | 5 | 10 | 15 | 5 | 10 | 15 | 5 | 10 | 15 | 5 | 10 | 15 |
| 6 | | 6 | 6 | 6 | 10 | 18 | 25 | 12 | 20 | 27 | 16 | 24 | 31 |
| 10 | | 6 | 6 | 6 | 12 | 18 | 25 | 14 | 20 | 27 | 20 | 26 | 34 |
| 16 | | 8 | 8 | 8 | 16 | 21 | 26 | 18 | 23 | 28 | 26 | 31 | 36 |