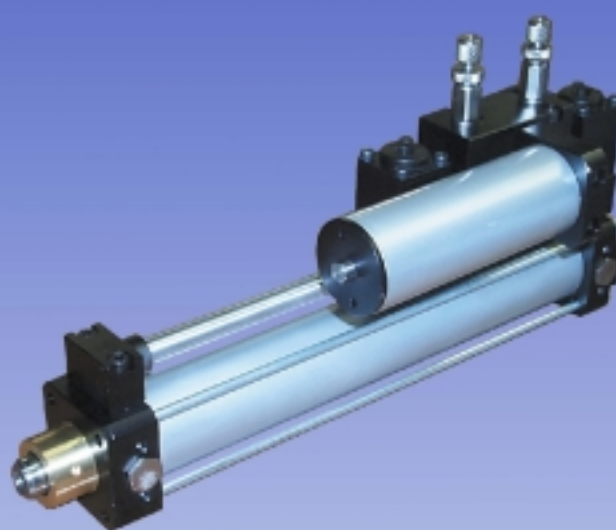


# CILINDRO FRENO IDRAULICO

*Hydraulic speed control*

1



Serie **CFI**

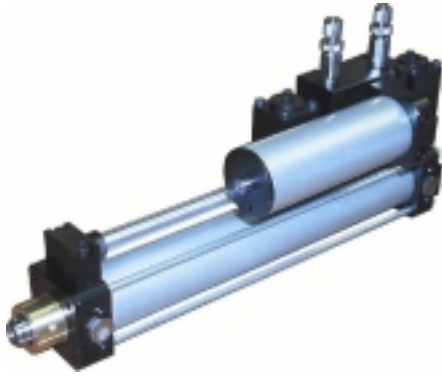
**FLUIDO SISTEM S.r.l.**

Via Nicomede Bianchi, 61/3 - 10146 TORINO (Italy)  
Tel. +39 011.797.322 - 011.797.420 / Fax +39 011.797.412  
E-mail: [fluidosistem@mclink.it](mailto:fluidosistem@mclink.it) - Web: [www.fluidosistem.it](http://www.fluidosistem.it)

1.16.00

# CILINDRI FRENO IDRAULICI

## HYRAULIC SPEED CONTROL



Il freno idraulico è un sistema ad olio a circuito chiuso da abbinare normalmente ad un cilindro pneumatico per ottenere un rallentamento regolabile della corsa. Sono disponibili diverse versioni:

Regolazione in spinta , in trazione e doppia regolazione.  
E' prevista una valvola di Skip , Stop od entrambe.

*Hydraulic speed regulator, Ø 40 is a system to oil closed circuit to bind together normally to a pneumatic cylinder in order to obtain an adjustable slowing down of the race. Various versions are available: Regulation in push, traction and double regulation. It is previewed one valve of Skin, Stop or both.*

### CHIAVE DI CODIFICA / KEY TO TYPE NUMBER

CFI 1,1,000

→ CORSA / STROKE

→ 1= SERBATOIO IN LINEA / IN LINE

2=SOLO REGOLATORE / ONLY REGULATOR

4=REGOLATORE + SKIP

5=REGOLATORE + STOP

6=REGOLATORE + SKIP + STOP

→ 1=REGOLATORE IN TRAZIONE (REG. USCITA STELO CIL.) / TRACTION REGULATOR (OUTLET CYLINDER'S ROD REG.)

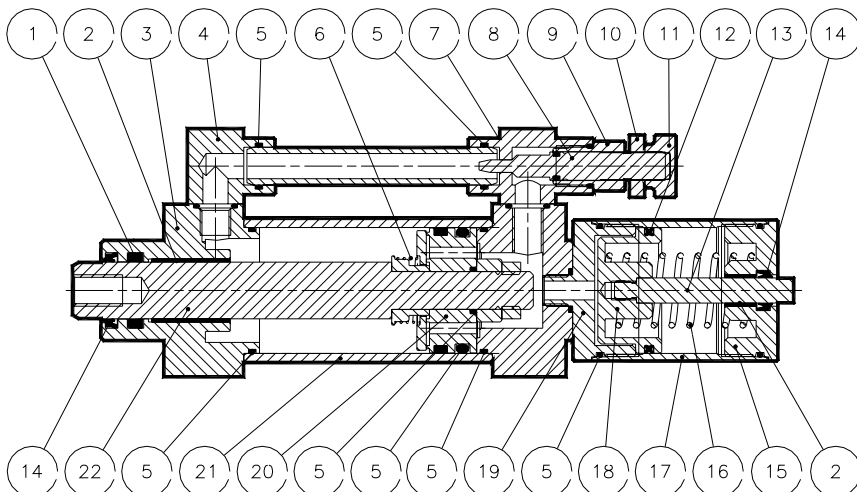
2=REGOLATORE IN SPINTA (REG. RIENTRO STELO CIL.) / PUSH REGULATOR (INLET CYLINDER'S ROD REG.)

3=REGOLATORE DOPPIO EFFETTO / DOUBLE ACTING REGULATOR

### CORSE STANDARD / STANDARD STROKES

Ø40 50-100-150-200-250-300-350-400-450-500

Carico max. / Max load	600Kg
Velocità min./max / Max./Min speed	60 - 10000 mm/min
Temperatura di esercizio / Temperature range	-10C° / +70C°

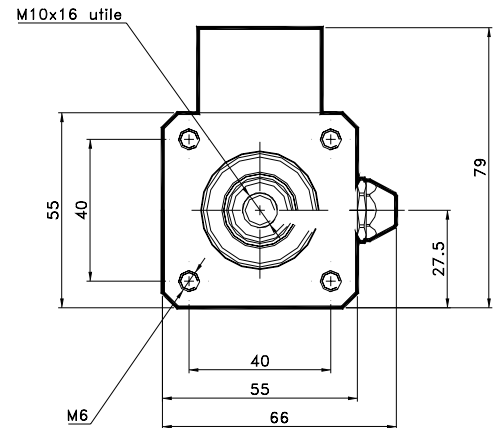
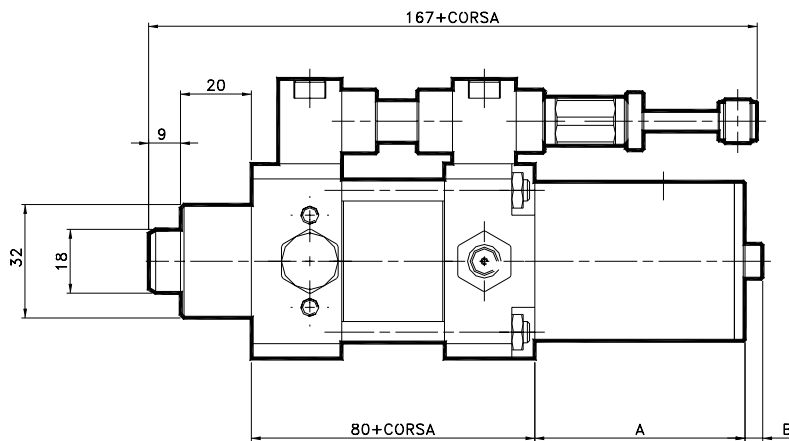


22	STELO	C45 Cromato
21	TUBO CILINDRO	Acciaio verniciato
20	PISTONE	Lega d'alluminio
19	BASE SERBATOIO	Lega d'alluminio anodizzato
18	PISTONE COMPENSATORE	Lega d'alluminio
17	CAMICIA COMPENSATORE	Acciaio verniciato
16	MOLLA	Acciaio per molle
15	TAPPO SUPERIORE	Lega d'alluminio anodizzato
14	RASCHIATORE BIDIREZIONALE	Poliuretano
13	ASTINA	C45 cromato
12	ANELLO QUAD RING	NBR
11	GHIERA DI REGOLAZIONE	Acciaio inox
10	GHIERA DI ARRESTO	Acciaio inox
9	CORPO STROZZATORE	Acciaio inox
8	SPILLO	Acciaio inox
7	BASSETTA STROZZATORE	Lega d'alluminio anodizzato
6	MOLLA	Acciaio per molle
5	OR	NBR
4	COLLETTORE	Lega d'alluminio anodizzato
3	TESTATA ANTERIORE	Lega d'alluminio anodizzato
2	BUSSOLA GUIDA	Acciaio + PTFE
1	GUARNIZIONE DI TENUTA	Poliuretano
Pos	Denominazione	Materiale

Elenco parti

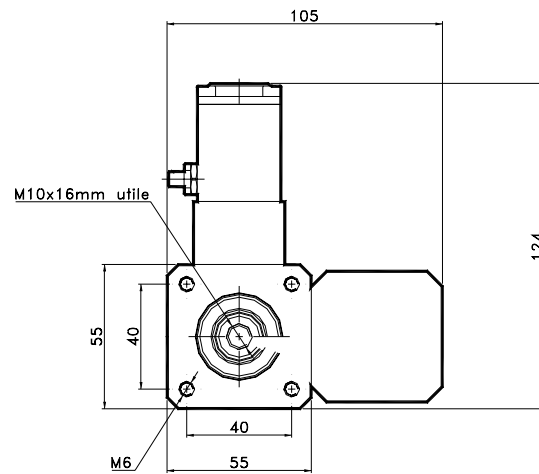
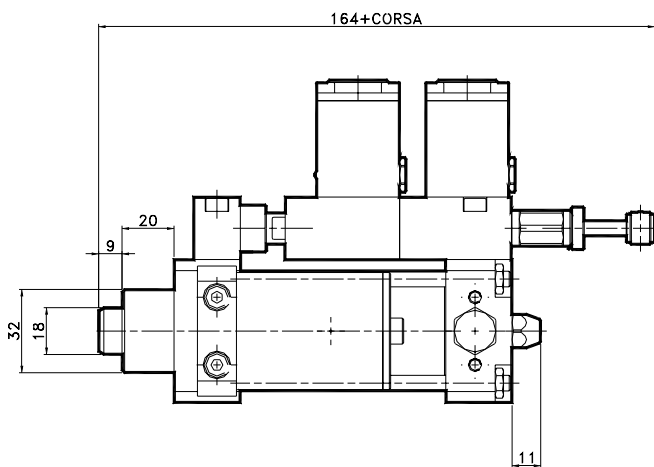
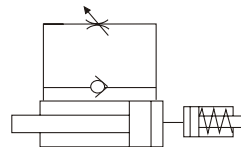
# CILINDRI FRENO IDRAULICI HYRAULIC SPEED CONTROL

1



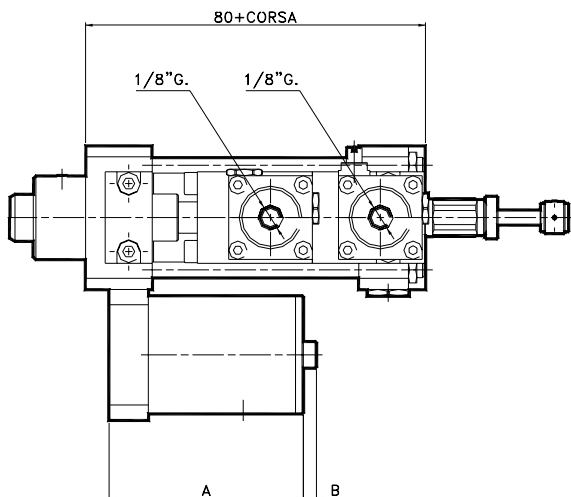
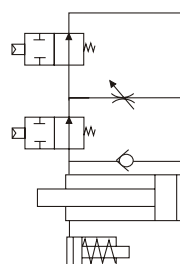
**REGOLAZIONE IN TRAZIONE SERBATOIO IN LINEA  
TRACTION REGULATOR - IN LINE OIL TANK**

Corse	A	B max.
< 75	75	25
75÷150	90	39
150÷250	142	65
250÷350	171	87
350÷500	222	125

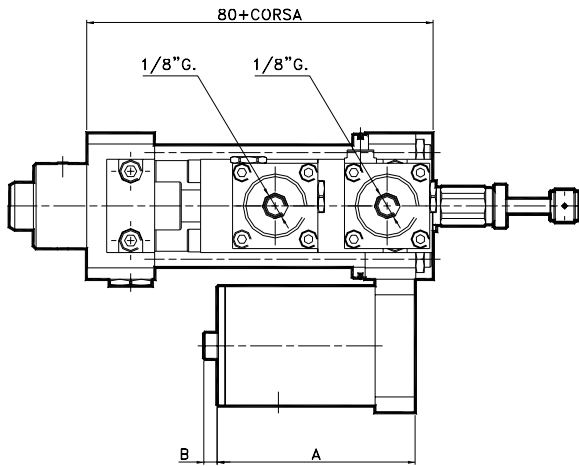
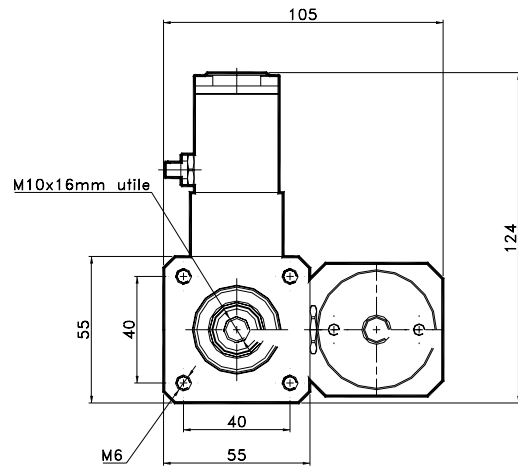
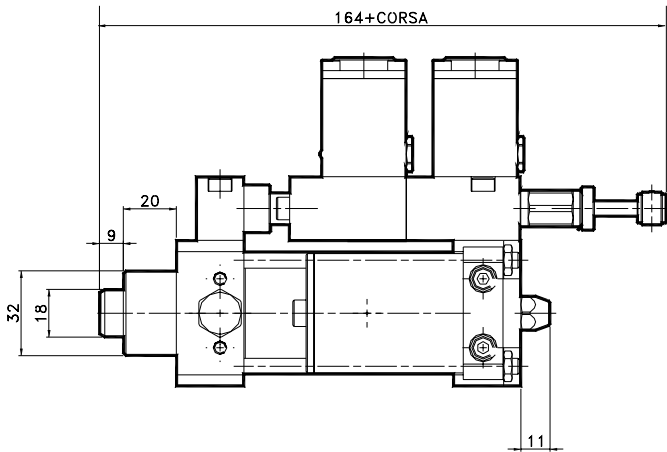


**REGOLATORE IN SPINTA + SKIP + STOP  
PUSH REGULATOR + SKIP + STOP**

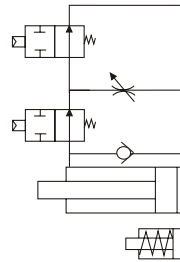
Corse	A	B max.
< 75	75	25
75÷150	90	39
150÷250	142	65
250÷350	171	87
350÷500	222	125



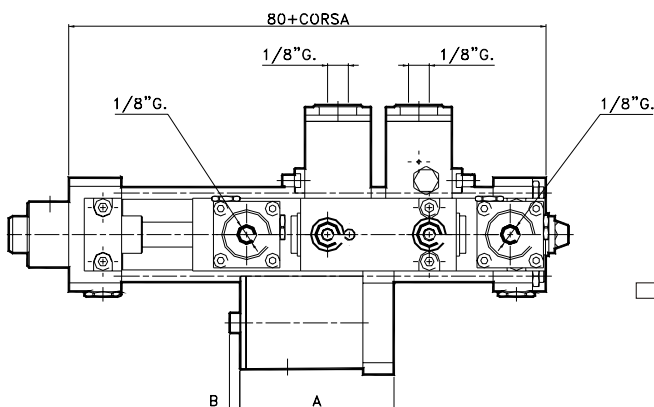
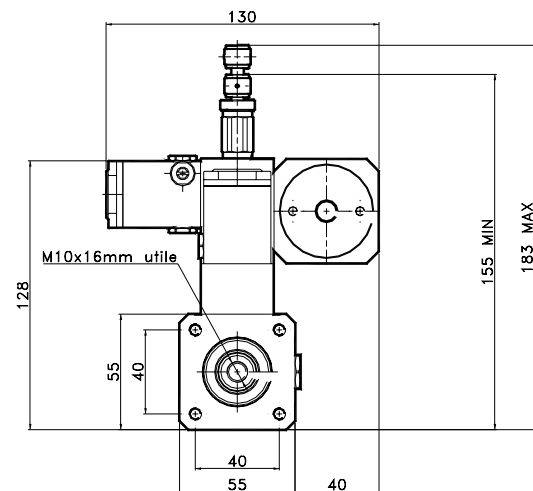
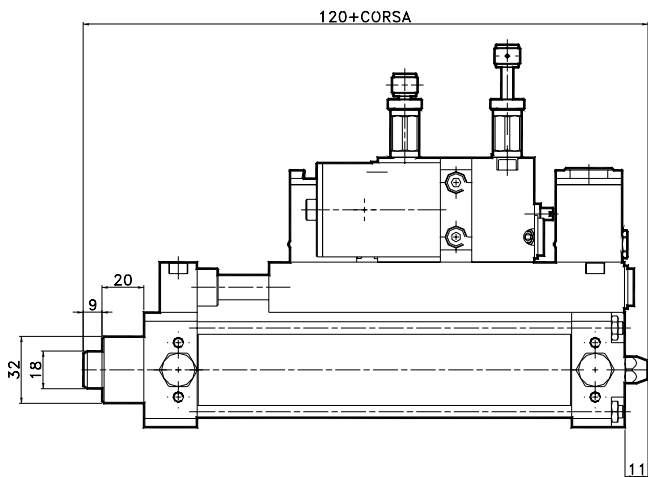
# CILINDRI FRENO IDRAULICI HYRAULIC SPEED CONTROL



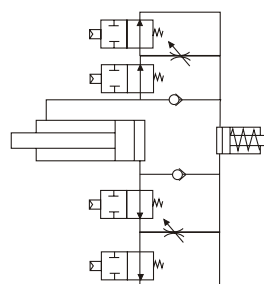
## REGOLAZIONE IN TRAZIONE + SKIP + STOP TRACTION REGULATOR + SKIP + STOP



Corse	A	B max.
< 75	75	25
75÷150	90	39
150÷250	142	65
250÷350	171	87
350÷500	222	125

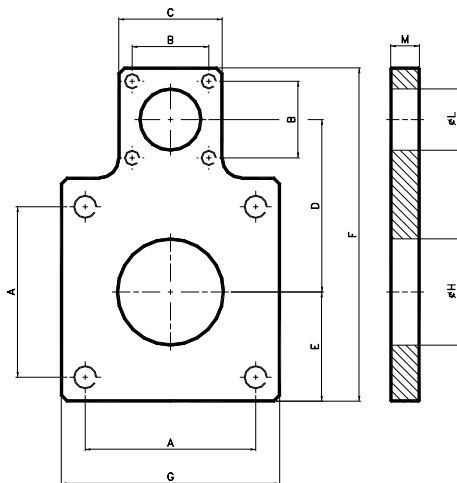


## REGOLAZIONE DOPPIO EFFETTO + SKIP + STOP DOUBLE ACTING REGULATOR + SKIP + STOP



Corse	A	B max.
150÷250	142	65
250÷350	171	87
350÷500	222	125

# CILINDRI FRENO IDRAULICI HYRAULIC SPEED CONTROL



## PIASTRA DI COLLEGAMENTO CONNECTION PLATE

COD.	Ø
CFI4179040	40
CFI4179050	50
CFI4179063	63
CFI4179080	80
CFI4179100	100

Ø	A	B	C	D	F	G	H	L	M
40	38	40	54	60	114	54	35.5	32	10
50	46.5	40	54	65	124	64	40.5	32	10
63	56.5	40	54	71.5	137	77	45.5	32	10
80	72	40	54	80	154	94	45.5	32	10
100	89	40	54	90	174	114	55.5	32	15

