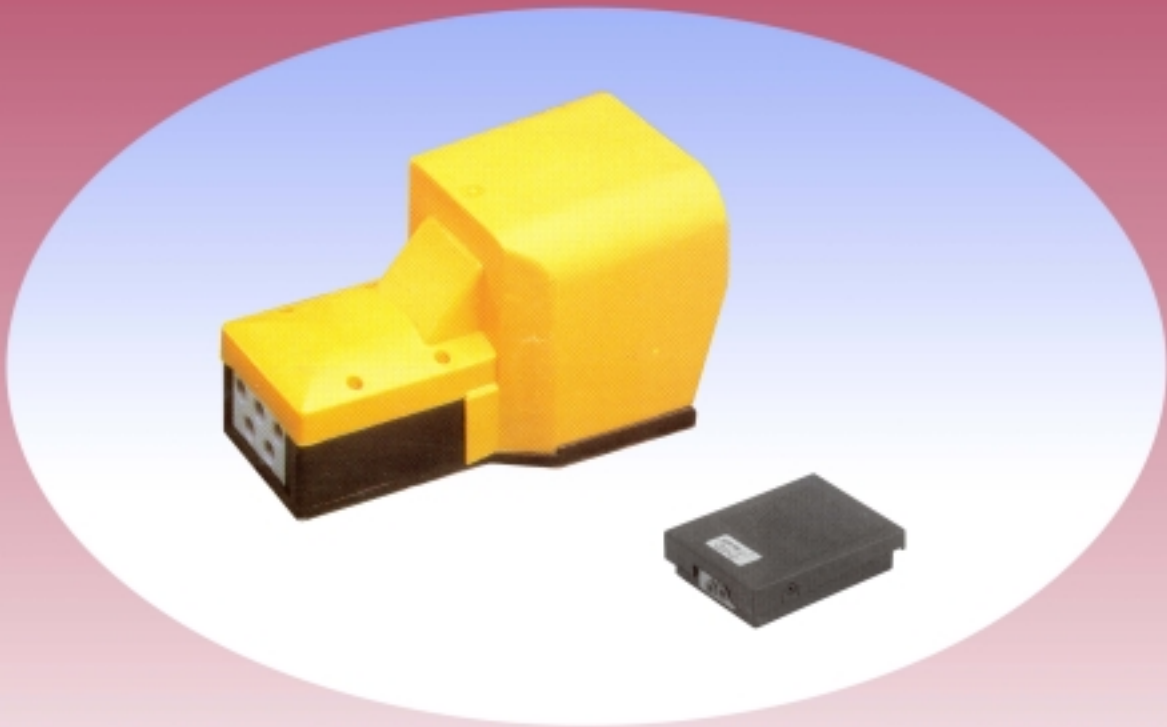


VALVOLE A PEDALE

Pedal valves



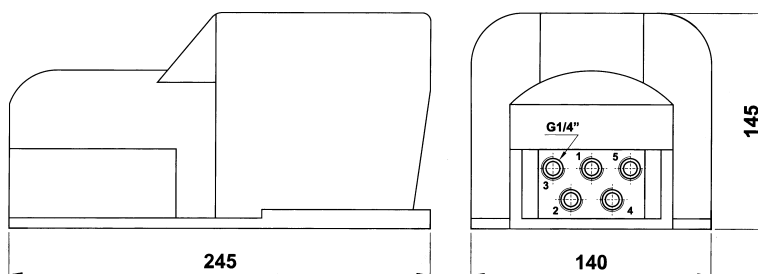
Serie **MA.PED**

FLUIDO SISTEM S.r.l.

Via Nicomede Bianchi, 61/3 - 10146 TORINO (Italy)
Tel. +39 011.797.322 - 011.797.420 / Fax +39 011.797.412
E-mail: fluidosistem@mclink.it - Web: www.fluidosistem.it

VALVOLE A PEDALE PEDAL VALVES

PEDALI CON PROTEZIONE PEDAL WITH PROTECTION COVER



Tipo / type		Codice / Code
	Monostabile <i>Monostable</i> 5/2	MA.PED 502 M
	Bistabile <i>Bistable</i> 5/2	MA.PED 502 B

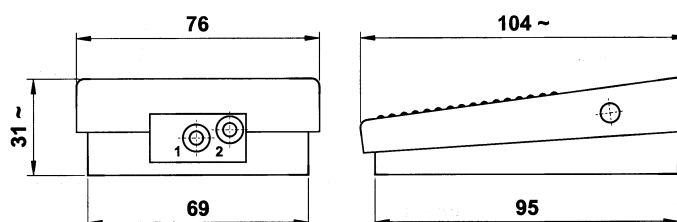
CARATTERISTICHE TECNICHE

Attacchi: 1/4"
Ø nominale: 7,5 mm
Protezione: materiale plastico antiurto

TECNICAL FEATURES

Ports: 1/4"
Nominal orifice: 7,5 mm
Protection cover: shock resistant plastic material

MICROPEDALI MICRO-PEDALS



Tipo / type		Codice / Code
	Monostabile <i>Monostable</i> 3/2 N.C.	MA.PED 304 M

CARATTERISTICHE TECNICHE

Attacchi: innesti rapidi per tubo Ø 4
Portata nominale: 100 NI/min (a 6 bar)

TECNICAL FEATURES

Ports: Ø 4 push-in
Nominal flow rate: 100 NI/min (at 6 bar)